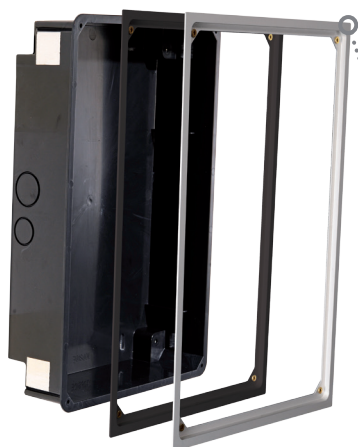




# iRoom's Backbox mini

installation backboxes



dry-wall or brick-wall installation

for all existing generations of miniDock  
(iRoom's miniDock & miniDock motorized)

either portrait or landscape installation

protrusion of miniDock surface is 2 mm  
(in retracted state of your iDock)



Your iRoom's **miniDock** may only be used in connection with an iRoom's **backbox**. This version allows to reach a maximum protrusion of your iDock of 2 mm. The aluminum frame is available in silver and black .

### Specifications

Dimension Backbox	226,0 / 315,0 / 78,0 mm	8.9" / 12.4" / 3.1"
Dimension Backbox cut-out	215,0 / 305,0 / 78,0 mm	8.5" / 12.0" / 3.1"

<b>iRoom's miniDock Installation box</b>	
<b>Flush-mount</b>	<b>Order no.</b>
iRoom's miniDock Installation Box black aluminum frame for flush-mount	BB-MINI-AB
iRoom's miniDock Installation Box silver aluminum frame for flush-mount	BB-MINI